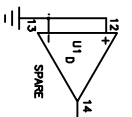


- U1 = TL074 TEXAS INSTRUMENTS QUAD OP-AMP
- U2 = TL074 TEXAS INSTRUMENTS QUAD OP-AMP
- U3 = TL074 TEXAS INSTRUMENTS QUAD OP-AMP
- U4 = AM3207 PANASONIC BUCKET BRIGADE 1024 STAGE INVERTER
- U5 = CH4047 NATIONAL DUAL COMPLEMENTARY PAIR PLUS
- U6 = CH4047 NATIONAL LOW POWER MONOSTABLE/ASTABLE MULTIVIBRATOR
- L1 = MOBILE # M10-50534-000



MORLEY	
SCALE 1=1	APPROVED BY <i>Scott Steffen</i>
DATE 5-8-96	DESIGNED BY S.F.
CRYSTAL CHORUS BOX (CCB)	
Schmech.dwg	
	REVISION
	DRAWING NUMBER